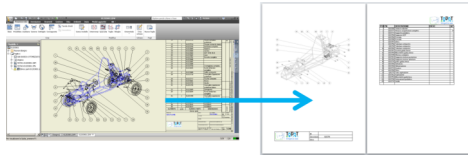


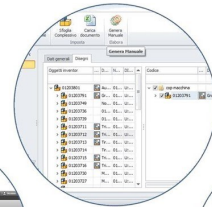
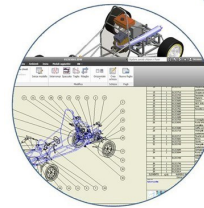
# ToDoT per Inventor

**From CAD models to Spare parts catalogue in one click !**

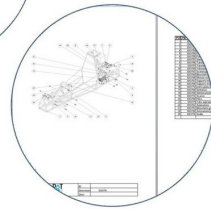


**The right tool for special machinery designers working with Inventor**

**Your design**  
One or more inventor assemblies



**Your catalog**  
In Office format for easy editing, or directly as .pdf



**ToDoT**  
Easy Editor

## ToDoT

Machinery designers time is best spent doing design: technical documents, such as the spare parts catalogue, can be extracted automatically.

No more time consuming "Find - Open - Convert - Copy - Paste - Page layout - Send to translator".

ToDoT is the right tool to **transform the drawings into a document**, interacting with Autodesk Inventor and Microsoft Office, without repetitive operations to extract drawings, data and graphics from projects drawn up in CAD.

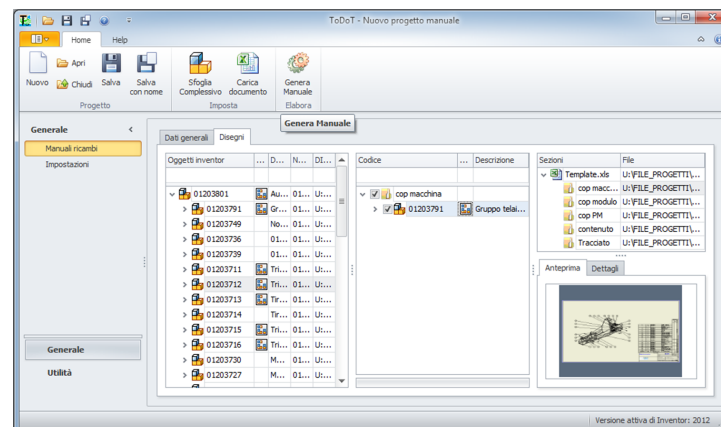
## ToDoT smart publish

ToDoT smart publish automates the tasks needed to read drawings from Autodesk Inventor and push and format the graphics in Excel, with an extraordinarily simple workflow:

- First step is an Excel template with the catalogue structure (completely customized with company logo, colours, layout);
- Then with the ToDoT editor the user loads an assembly (or more);

- The subgroups are associated with the sections of the spare parts catalogue. These settings can be saved for re-use when similar catalogues are made;
- Then you run processing: ToDoT processes the assembly, opens the selected tables in Inventor, extracts graphics and BOM, paginates them in an Excel file;

On your choice ToDoT saves the catalogue directly in .pdf, or launches a customizable post-production module (for example to create summaries at the bottom of the file, extract information from other data sources, etc.).





## What about translations?

Multilingual catalogues production is very easy, thanks to a specialized module, ToDoT can insert descriptions in any language, reading from a database that can be managed with a simple Excel sheet.

The Workflow is quite simple:

- ToDoT reads the parts lists from Inventor;
- For each code, looks for the translation in the chosen language;
- If in the model we are processing there are components that don't have translation, the program will just append them to the translation database and give a signal to the user. The catalogue is processed anyway, then it's sufficient to send the added entries into translation and refresh the catalogue.

The module can be customized: translations can also be read from external databases, such as ERP systems.

## Customization

Once the catalogue is produced, it doesn't mean we have finished: do we need summaries? Recommended spare parts lists? Other? Simply create post-production scripts directly in Excel with its macro environment, to read external databases, summarize, insert indexes, etc.

## ToDoT CAD Automation

ToDoT CAD Automation module meets the need to quickly **transform the CAD models into a document**, when the final document is simply the drawing converted into .pdf, .dwg, .dxf.

Just select an assembly and all drawings of each contained model are automatically converted.

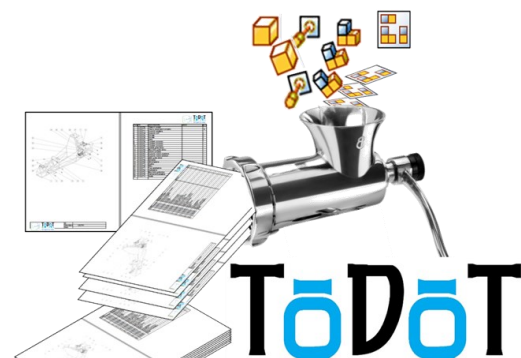
### And when the final document is a sheet of paper?

With the same module we can print all the drawings of an assembly, with automatic printer selection based on paper size and all the options needed for maximum flexibility.

## Compatibility

All products are compatible with these versions::

- Autodesk Inventor 2017,2018, 2019, 2020;
- Office 2010 o higher;




**SINGECA sas**  
The CAD Automation specialists  
[www.singeca.it](http://www.singeca.it) – [info@singeca.it](mailto:info@singeca.it)

Authorized reseller  
**3UNITS**  
TECHNOLOGY  
[www.3units.ch](http://www.3units.ch)

Luigi Tornaghi  
[luigi.tornaghi@3units.ch](mailto:luigi.tornaghi@3units.ch)  
Ph. +393273646867

