

AX3000 VENTILATION

Building services engineering

Authorized reseller



www.3units.ch

Luigi Tornaghi
luigi.tornaghi@3units.ch
Ph. +393273646867



What makes AX3000 different?



What makes AX3000 different?

- AX3000 is available as Plug-In for
 - BricsCAD V17-V20
 - Allplan 2017-2019
 - AutoCAD 2017-2020
- All versions and platforms are 100% compatible
- Easy interface enables quick training
- Work in CAD with familiar functions.
- ONE tool for all planning phases
- ONE intuitive program workflow with both:
Easyline (1-line dimensioning)
AND
construction



What makes AX3000 different?

- Innovation and competences
- Own calculation kernel / own calculations
- Trace calculation stages separately – calculations without interfaces
- Graphical check of the building elements
 - everything is testable
 - detect errors immediately
- AX3000 integrates everything from standardized parts lists, graphical fitting lists to CNC-manufacturing lists
- Graphical presentation:
 - Holohedral (filled), black-and-white, no fill
 - with and without hidden edges

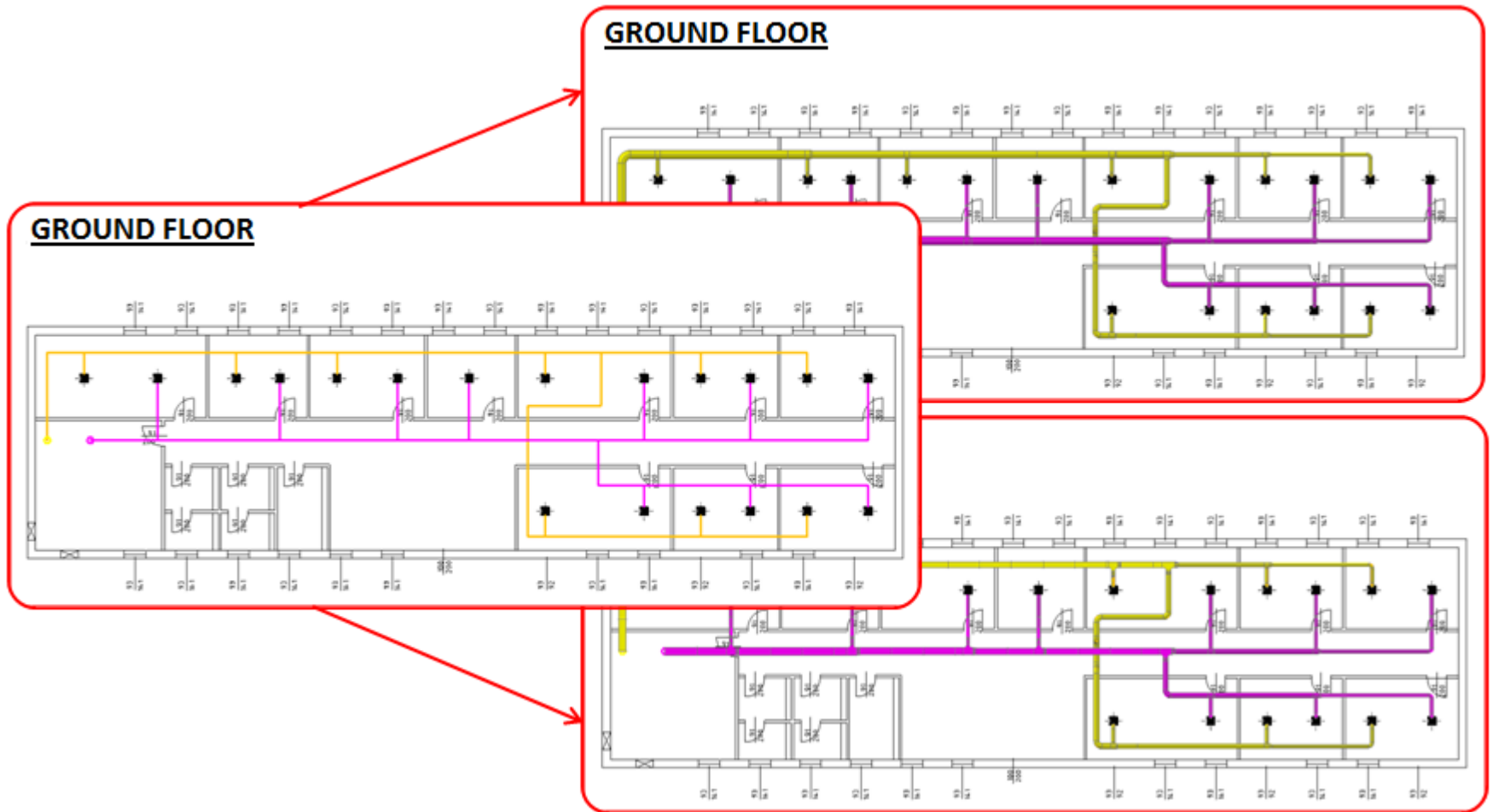
Main Advantages of AX3000



Main Advantages of AX3000

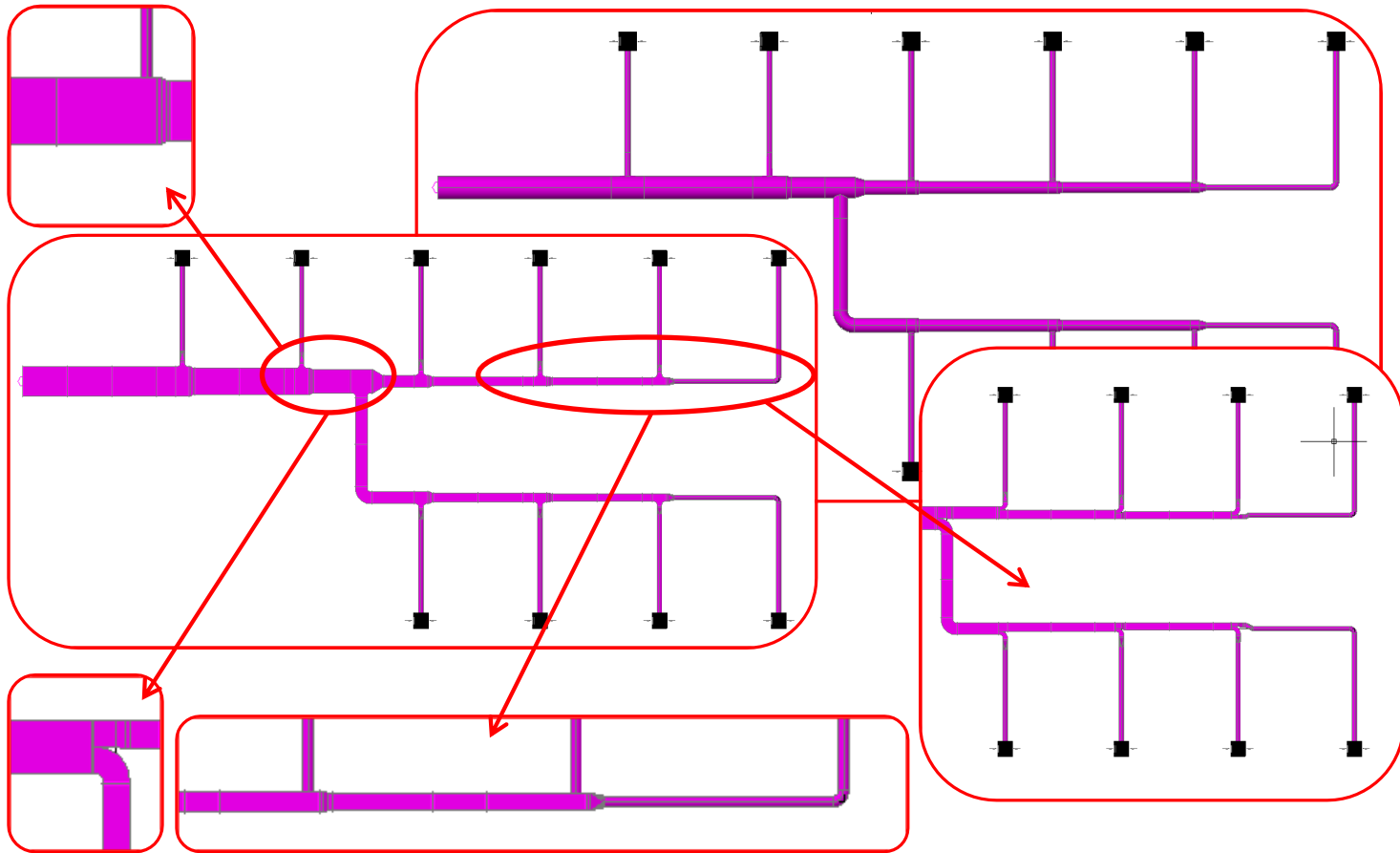
1. Easy planning with „Easyline“ (1-line dimensioning)
2. Use the „normal“ CAD drawing functions
3. Generation of ducting with variants
4. Calculation of the ducting (Pressure loss/Sonic/Temperature loss)
5. Graphical analysis of the calculations
6. Construction and detailed planning
7. Generate lists in Excel
8. Output to the manufacturing
9. Overall drawing workflow
10. Plan output in color or black-and-white with/without filling, with/without hidden edges
11. Total compatibility among CAD systems

Main Advantages of AX3000



Easy planning with “Easyline”

Main Advantages of AX3000



Generation of ducting with variants

Main Advantages of AX3000

Seite 1 von 1

Pressure loss

Job: Büro_2d_leer_recover
Customer: AX-3000

Date/Time: 17. März 2011



Best. Nr.
Projekt:
Znr.:

System: L_Zuluft-klimatisiert

Roughness: 0,150 mm Density: 1,2 Air temperature: 20,0 °C
Duct: 0,150 mm
Flex: 0,600 mm

Line	Position	Name	Dimensions (mm)					Vflow m³/h	Velocity m/s	R Pa/m	Zeta	Pressl EBT	Pressure loss	
			L/a	a1 d1	b1 d2	a2 d3	b2 d4						a3	single Pa
Deckenluftdurchlass 3d DLQ-4-AK-M-ZUL														
1.0							280,0					12,0	12,0	12,0
1.1	Line	293	160	160			280,0	3,9	1,4			0,4	12,4	
1.2	Branch	2738	201	201	160	160	280,0	3,9	1,4	3,6		17,0	29,4	
1.3	Tee (Passage)	4897	241	241	201	241	560,0	3,8	0,9	0,1		4,7	34,2	
1.4	Tee (Passage)	7301	267	267	241	267	910,0	4,3	0,9			6,8	40,9	
1.5	Tee (Passage)	4235	289	289	267	289	1190,0	4,6	0,9			3,9	44,9	
1.6	Tee (Passage)	5466	312	312	289	312	1470,0	4,9	0,9			5,1	49,9	
1.7	Tee (Passage)	4583	336	336	312	336	1750,0	5,0	0,9			4,0	53,9	
1.8	Line	165	336	336			2030,0	5,0	0,8			0,1	54,1	
	dp-dyn.						2030,0						15,0	
Entire:												69,0 Pa		

Seite 1 von 4

Pressure loss

Büro_2d_leer_recover
AX-3000

Date/Time: 17. März 2011



System: L_Zuluft-klimatisiert

Position	Name	Dimensions (mm)					Vflow m³/h	Velocity m/s	R Pa/m	Zeta	Pressl EBT	Pressure loss		
		L/a	a1 d1	b1 d2	a2 d3	b2 d4						a3	single Pa	entire Pa
Deckenluftdurchlass 3d DLQ-4-AK-M-ZUL														
0	Line	293	200	200			350,0					15,0	15,0	
1	Branch	2738	241	241	200	200	350,0	3,1	0,7			0,2	15,2	
2	Balance position						350,0	3,1	0,7	5,9			16,0	
Deckenluftdurchlass 3d DLQ-4-AK-M-ZUL														
0	Line	293	160	160			280,0					12,0	12,0	
1	Line	2738	160	160	160		280,0	3,9	1,4			0,4	12,4	
2	Tee (Passage)	5512	201	201	160	201	560,0	3,9	1,4	0,1		4,5	16,9	
3	Balance position						560,0	3,9	1,4	0,3			17,7	
Deckenluftdurchlass 3d DLQ-4-AK-M-ZUL														
0	Line	293	160	160			280,0					12,0	12,0	
1	Branch	2738	267	267	160	160	280,0	3,9	1,4			0,4	12,4	
2	Balance position						280,0	3,9	1,4	7,7			19,8	
Deckenluftdurchlass 3d DLQ-4-AK-M-ZUL														
0	Line	293	160	160			280,0					12,0	12,0	
1	Line	2738	160	160	160		280,0	3,9	1,4			0,4	12,4	
2	Branch	2738	289	289	160	160	280,0	3,9	1,4	10,1			21,5	
3	Balance position						280,0	3,9	1,4	10,1			21,5	
Deckenluftdurchlass 3d DLQ-4-AK-M-ZUL														
0	Line	293	160	160			280,0					12,0	12,0	
1	Line	293	160	160			280,0	3,9	1,4			0,4	12,4	
2	Branch	2738	312	312	160	160	280,0	3,9	1,4	11,8			21,3	
3	Balance position						280,0	3,9	1,4	11,8			21,3	
Deckenluftdurchlass 3d DLQ-4-AK-M-ZUL														
0	Line	293	160	160			280,0					12,0	12,0	
1	Line	293	160	160			280,0	3,9	1,4			0,4	12,4	
2	Branch	2738	336	336	160	160	280,0	3,9	1,4	12,7			25,3	

Line	Position	Name	L/a
Lateral line			
Deckenluftdurchlass 3d DLQ-4-AK-M-ZUL			
2.0			
2.1	Line	293	
2.2	Branch	2738	
1.4	Balance position		
Sum			
Adjustment			
Lateral line			
Deckenluftdurchlass 3d DLQ-4-AK-M-ZUL			
3.0			
3.1	Line	293	
3.2	Line	2738	
3.3	Tee (Passage)	5512	
1.3	Balance position		
Sum			
Adjustment			

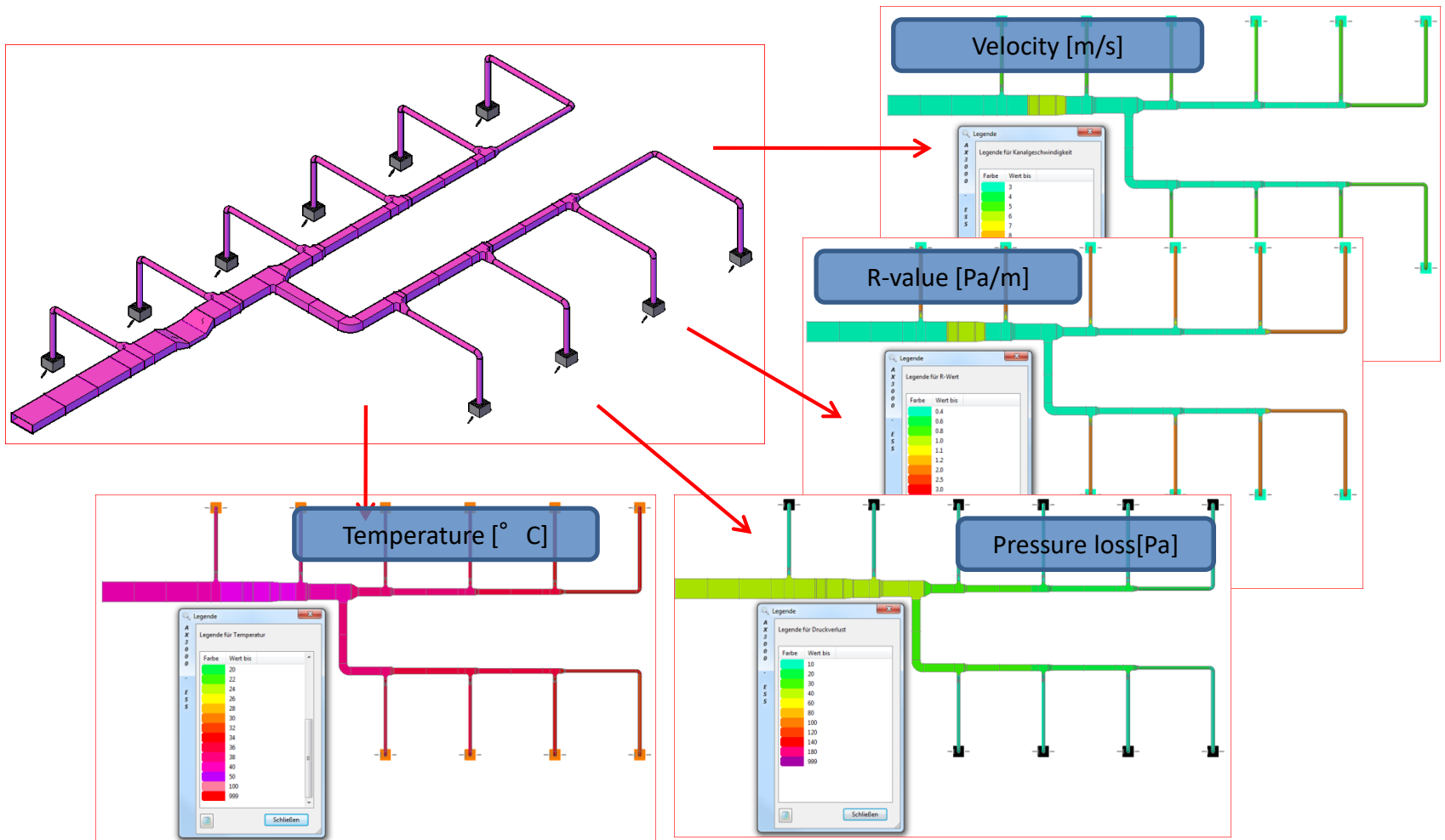
Auftrag: Lüftung materialwechsel

Name	63 Hz	125 Hz	250 Hz	500 Hz	1000 Hz	2000 Hz	4000 Hz	8000 Hz
Anfangspunkt								
1	82	77	78	80	81	76	69	64
2	82	77	78	80	81	76	69	64
Stang 1.7: Kanal 5,36 m Lw=85,3 LwA=82,8								
1	-3,2	-3,2	-2,4	-1,6	-1,1	-1,1	-1,1	-1,1
2	79	74	76	79	80	75	68	63
Stang 6.2: Abzweig Rohr 3,95 m Lw=77,4 LwA=74,8								
1	19	14	9	2	-4,1	-11,0	-18,4	-26,1
2	-7,9	-7,9	-7,9	-7,9	-7,9	-7,9	-7,9	-7,9
3	71	66	68	71	72	67	60	55
4								
5	-0,4	-0,4	-0,6	-0,6	-1,2	-1,2	-1,2	-1,2
6	70	65	67	70	71	66	59	54
Stang 6.1: Rohr 2,62 m Lw=76,2 LwA=73,1								
1	-0,3	-0,3	-0,4	-0,4	-0,8	-0,8	-0,8	-0,8
2	70	65	67	70	70	65	58	53
ADLQ-2-AKAC Luftdurchlass Abluft								
1	-12,0	-13,0	-14,0	-15,0	-16,0	-15,0	-14,0	-12,0
2	58	52	53	55	54	50	44	41
AC-Savertete gesamte Schallleistung dBA) 57,8								
1								
2	32	30	44	51	54	51	45	42

Calculation of the ducting (Pressure loss/Sonic/Temperature loss)

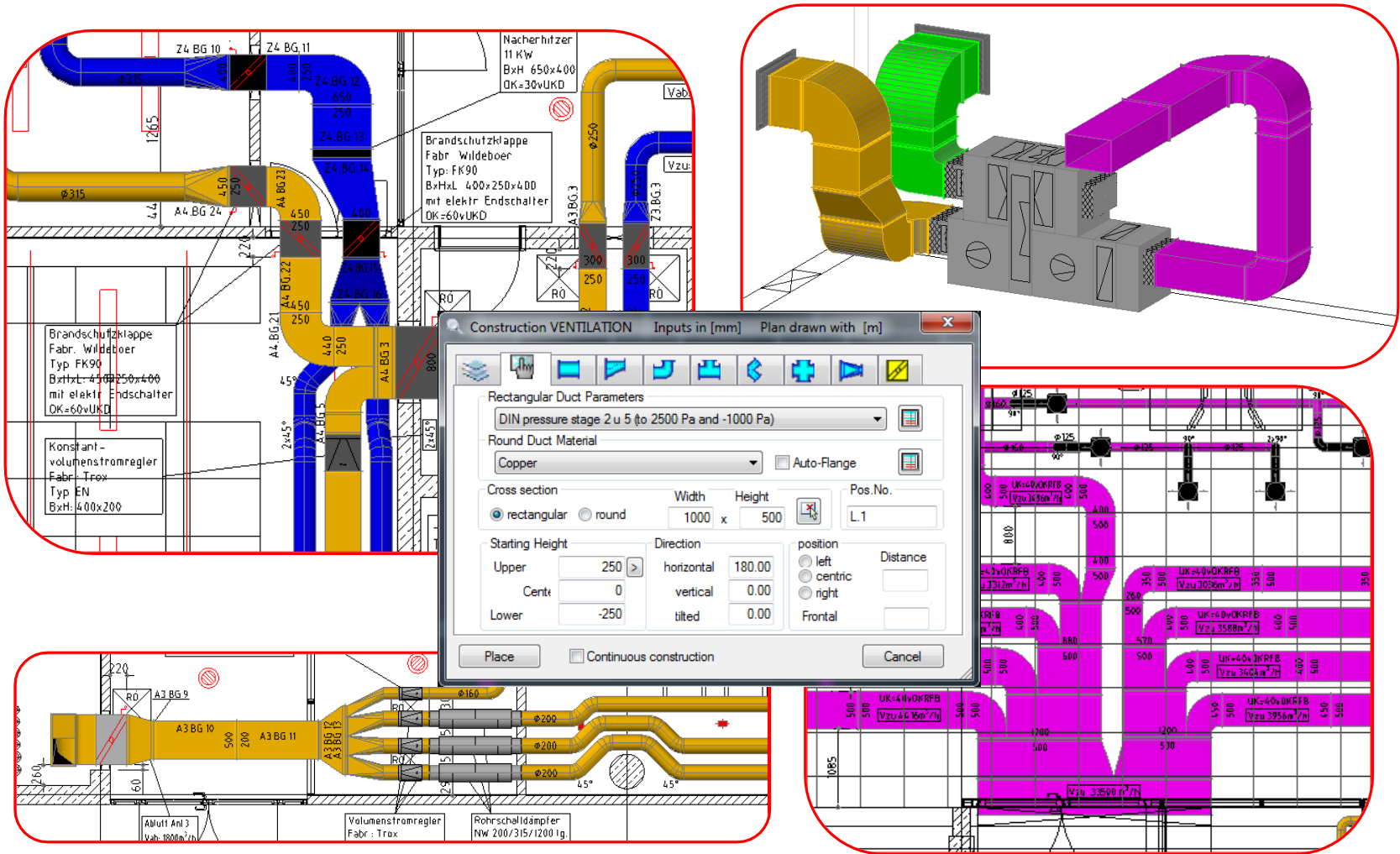


Main Advantages of AX3000



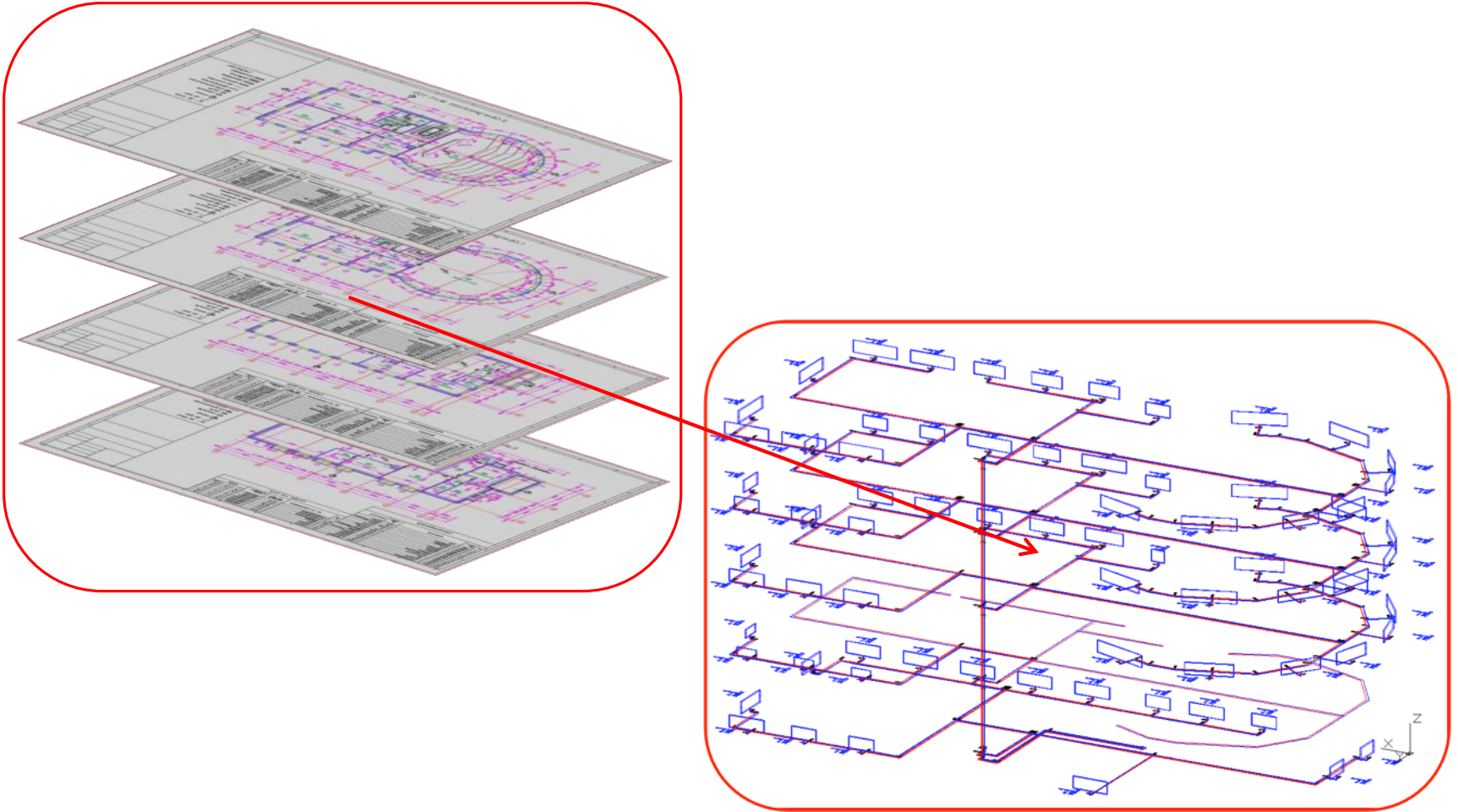
Graphical analysis of the calculations

Main Advantages of AX3000



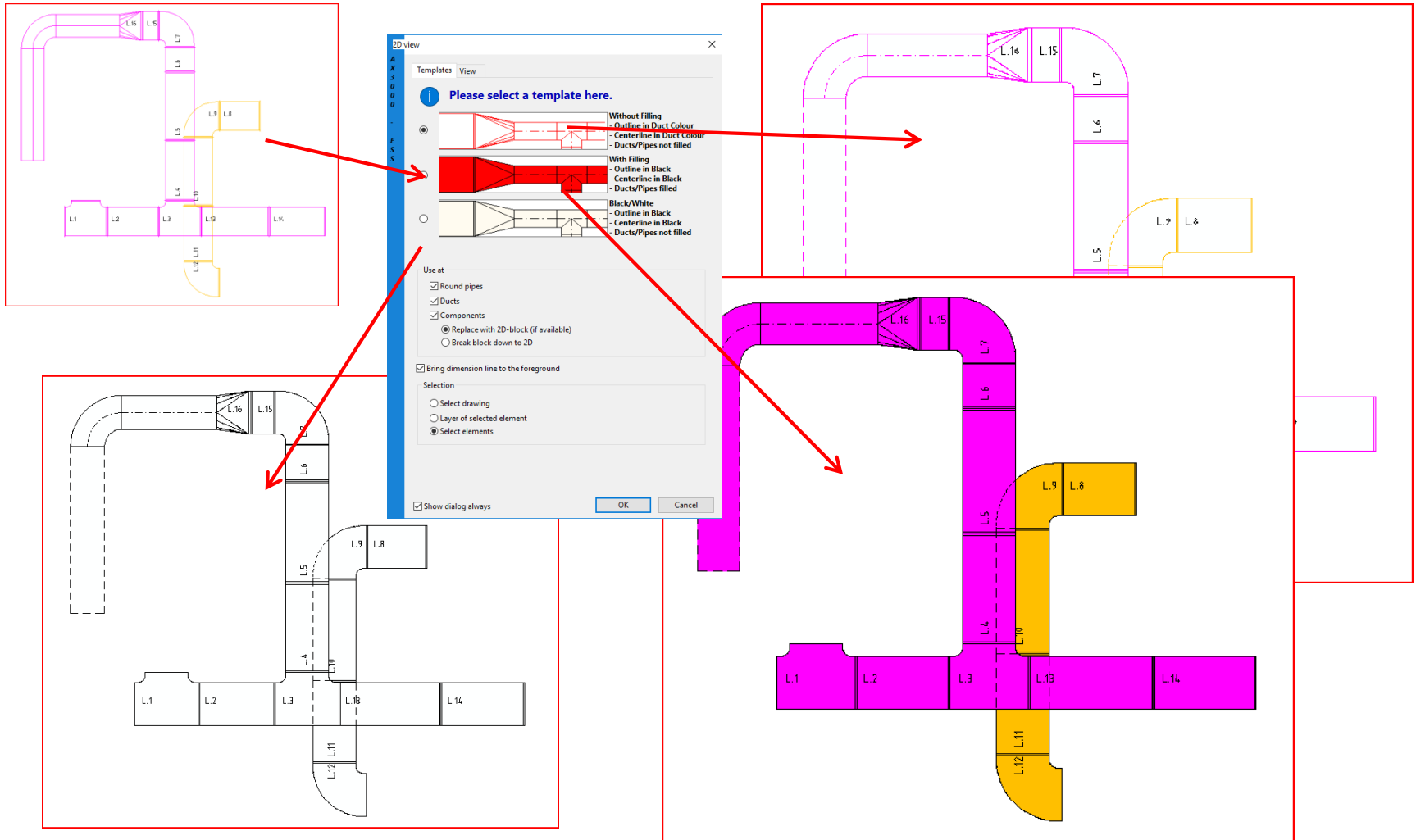
Construction and detailed planning

Main Advantages of AX3000



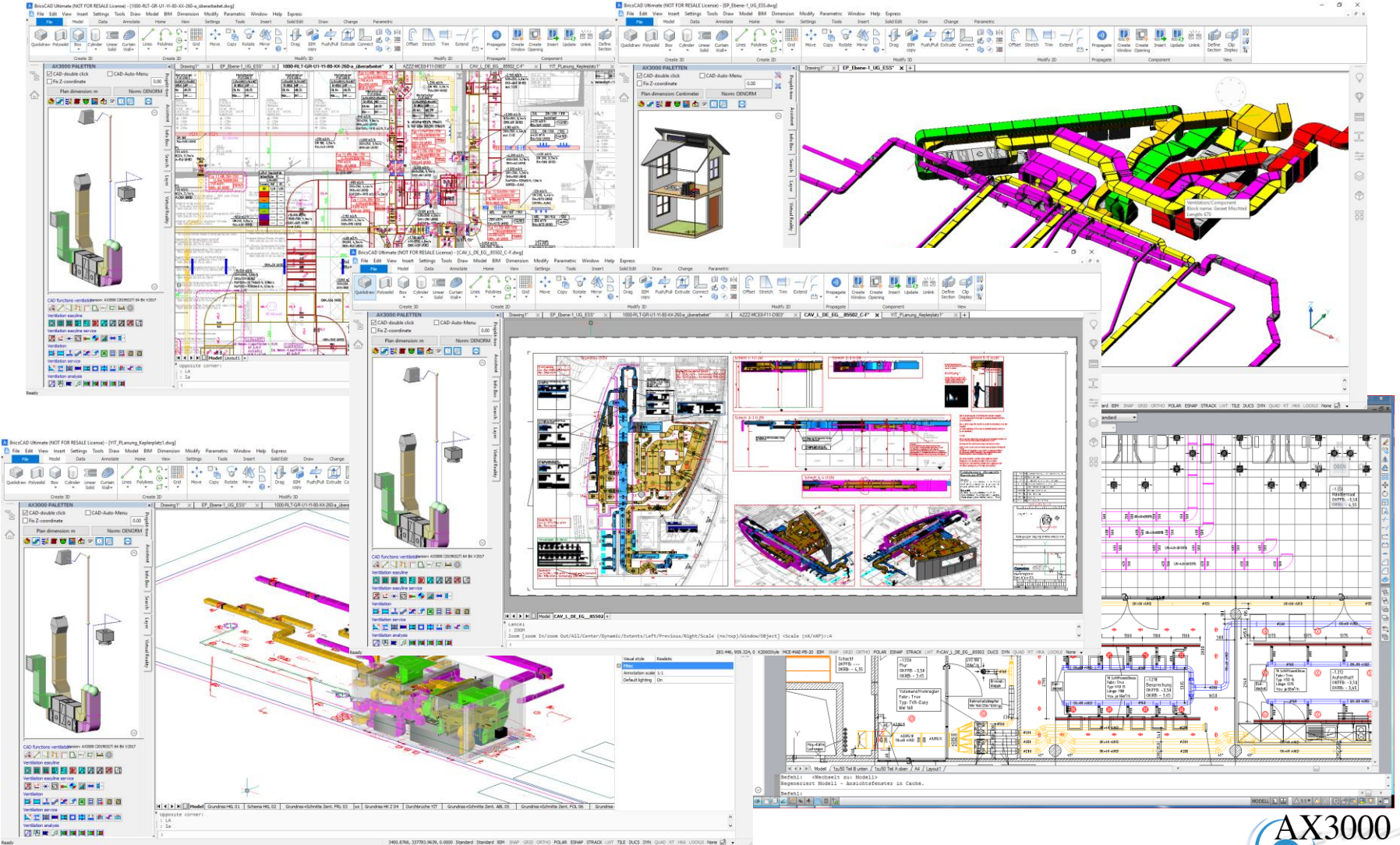
Overall drawing workflow

Main Advantages of AX3000



Plan output in color or black-and-white with/without filling, with/without hidden edges

Main Advantages of AX3000



AX3000 VENTILATION

A man in a dark suit is seen from the side, pointing with a pen at a large, complex architectural drawing of a ventilation system. The drawing is overlaid on a background of blue and white pipes and ductwork. The drawing contains various technical specifications, including labels like 'AB', 'EG1', 'EG2', 'ZUe.g.', and 'Rev. A'.

Contact

Headquarter

EDV - Software-Service GmbH & Co.
Bahnhofstrasse 8 | A - 9500 Villach
Tel. (+43) 42 42 / 27876
Fax (+43) 42 42 / 27876-30

info@ax3000-group.de
<http://www.ax3000-group.de>

